



DEPARTMENT OF PUBLIC WORKS  
PARKS AND STREETS  
CITY OF BUFFALO, NEW YORK

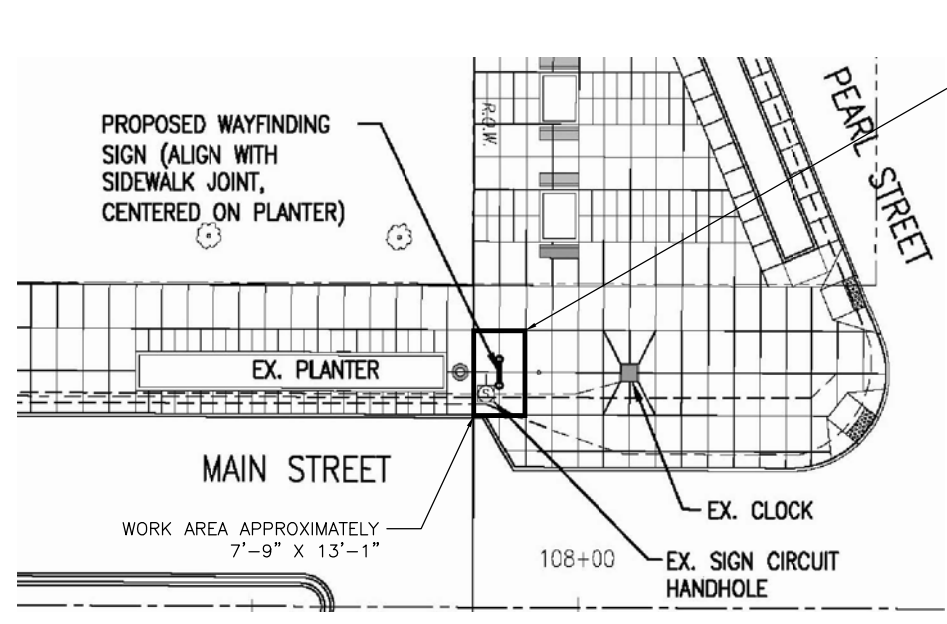
**PB PARSONS  
BRINCKERHOFF**  
50 LAKEFRONT BOULEVARD, SUITE 111  
BUFFALO, N.Y. 14202  
716-853-1220

MAIN STREET —  
600 BLOCK  
CHIPPEWA STREET TO  
TUPPER STREET



**NOTE:**  
SIGN LOCATIONS INDICATED ARE APPROXIMATE ONLY. SEE STREETScape PLANS DWGS. LS101 THROUGH LS103 AND ENLARGEMENTS C1 & C4 ON STREETScape PLAN ENLARGEMENTS DWG. LS402 FOR EXACT LOCATIONS ON MAIN STREET 600 BLOCK. SEE WAYFINDING PLAN DWG. WF102 FOR LOCATION OF SIGNS ON WASHINGTON STREET AND PEARL STREET.

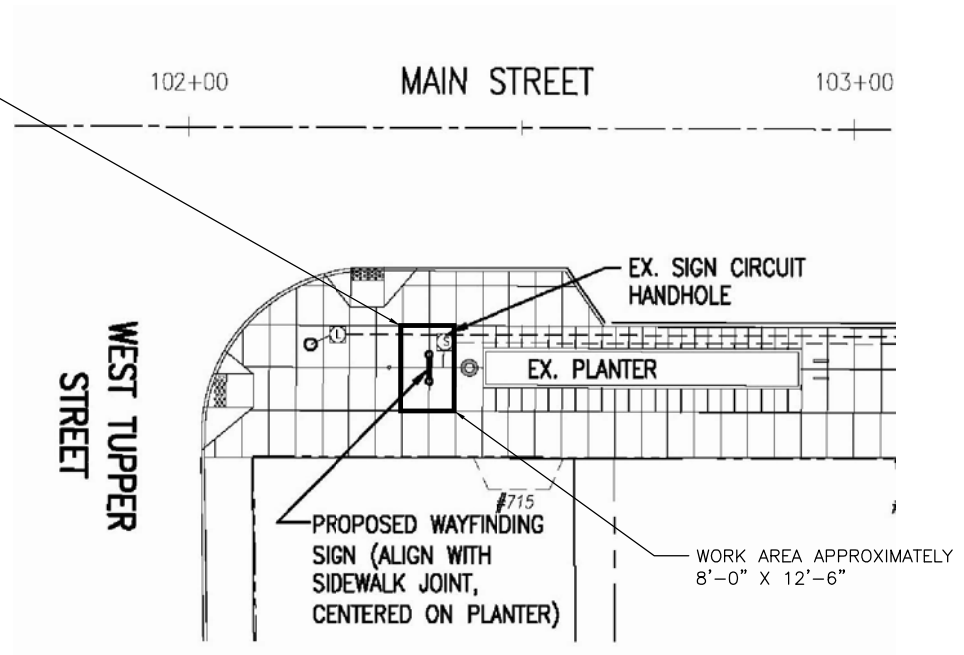
**C1 WAYFINDING SIGN LOCATIONS**  
NOT TO SCALE



**A1 700 BLOCK MAIN STREET SIGN #1 LOCATION PLAN**  
NOT TO SCALE

SAWCUT, REMOVE AND REPLACE 6" EXPOSED AGGREGATE CONCRETE SIDEWALK TO NEAREST JOINT. (PAYMENT TO BE MADE UNDER ITEM APPLICABLE ITEMS)

- 700 BLOCK SIGN NOTES:**
1. FURNISH AND INSTALL CONDUIT TO EXISTING HANDHOLE.
  2. FURNISH AND INSTALL WIRING FROM SIGNS TO HANDHOLE AND BACK TO 700 BLOCK PANEL BOARD. SEE DWG ES506.
  3. RESTORE EACH LOCATION TO ORIGINAL CONDITIONS
  4. ALL ELECTRICAL AND RESTORATION WORK SHALL BE INCLUDED UNDER LUMP SUM ITEMS FOR WAYFINDING SIGNS.



**A5 700 BLOCK MAIN STREET SIGN #2 LOCATION PLAN**  
NOT TO SCALE

| MARK | DATE    | DESCRIPTION          |
|------|---------|----------------------|
| △    | 11/7/11 | PS&E UPDATE          |
| △    | 6/17/11 | PS&E UPDATE          |
| △    | 4/13/11 | PS&E                 |
| △    | 4/1/11  | DRAFT PS&E           |
| △    | 1/13/11 | PROGRESS DRAWING SET |

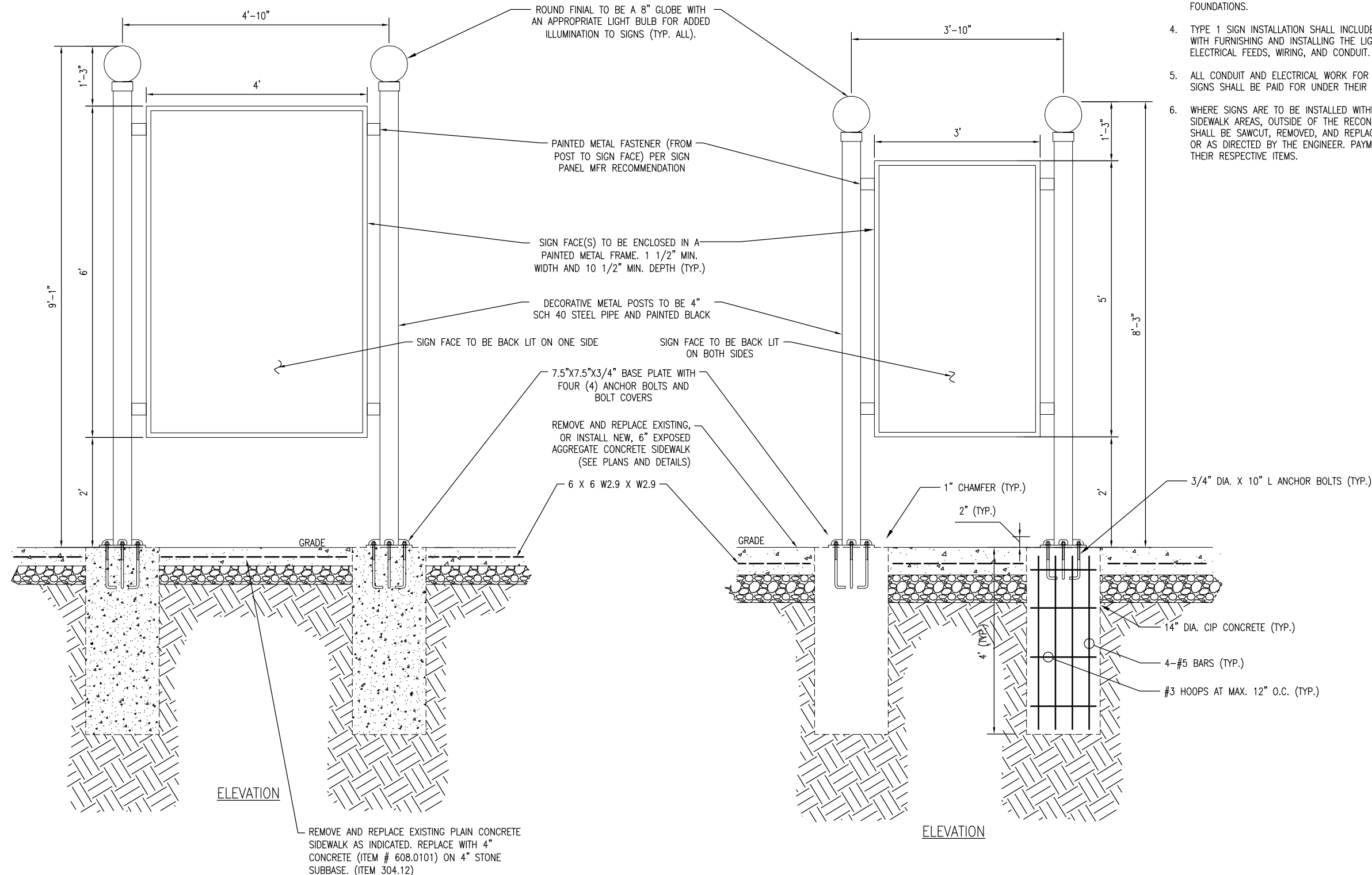
|                       |                           |
|-----------------------|---------------------------|
| ISSUE:                |                           |
| PIN:                  | 5822.12                   |
| DESIGNER PROJECT NO.: | 09-1502                   |
| CAD DWG FILE:         | WF101 WAYFIND.. SIGNS.dwg |
| DRAWN BY:             | EG                        |
| CHECKED BY:           | GEM                       |
| SCALE:                | AS NOTED                  |
| COPYRIGHT:            | AS NOTED                  |

SHEET TITLE  
**WAYFINDING SIGNS  
GENERAL LOCATIONS**

DRAWING#  
**WF101**  
SHEET# 127 OF 185

1 2 3 4 5 6 7

E  
D  
C  
B  
A



- NOTES:**
- REFER TO SPECIFICATIONS FOR MATERIAL, FINISH, AND OTHER REQUIREMENTS.
  - CONDUIT ROUTING THROUGH FOUNDATION NOT SHOWN FOR CLARITY.
  - CONCRETE AND REINFORCING SHOWN IS TYPICAL FOR ALL SIGN FOUNDATIONS.
  - TYPE 1 SIGN INSTALLATION SHALL INCLUDE ALL WORK ASSOCIATED WITH FURNISHING AND INSTALLING THE LIGHTED SIGN, INCLUDING ELECTRICAL FEEDS, WIRING, AND CONDUIT.
  - ALL CONDUIT AND ELECTRICAL WORK FOR POWER FEED TO TYPE 2 SIGNS SHALL BE PAID FOR UNDER THEIR RESPECTIVE ITEMS.
  - WHERE SIGNS ARE TO BE INSTALLED WITHIN EXISTING CONCRETE SIDEWALK AREAS, OUTSIDE OF THE RECONSTRUCTION LIMIT, SIDEWALKS SHALL BE SAWCUT, REMOVED, AND REPLACED TO THE LIMITS INDICATED OR AS DIRECTED BY THE ENGINEER. PAYMENT WILL BE MADE UNDER THEIR RESPECTIVE ITEMS.



DEPARTMENT OF PUBLIC WORKS  
PARKS AND STREETS  
CITY OF BUFFALO, NEW YORK

**PB PARSONS  
BRINCKERHOFF**  
50 LAKEFRONT BOULEVARD, SUITE 111  
BUFFALO, N.Y. 14202  
716-853-1220

MAIN STREET —  
600 BLOCK  
CHIPPEWA STREET TO  
TUPPER STREET

| MARK | DATE    | DESCRIPTION |
|------|---------|-------------|
| △    | 11/7/11 | PS&E UPDATE |
| △    | 4/17/11 | PS&E UPDATE |
| △    | 4/13/11 | PS&E        |
| △    | 4/1/11  | DRAFT PS&E  |

ISSUE:

|                      |                         |
|----------------------|-------------------------|
| PIN:                 | 5822.12                 |
| DESIGNER PROJECT NO: | 09-1502                 |
| CAD DWG FILE:        | WF501 WAYFINDING ...dwg |
| DRAWN BY:            | PMB                     |
| CHECKED BY:          | TI                      |
| SCALE:               | AS NOTED                |
| COPYRIGHT:           |                         |

SHEET TITLE

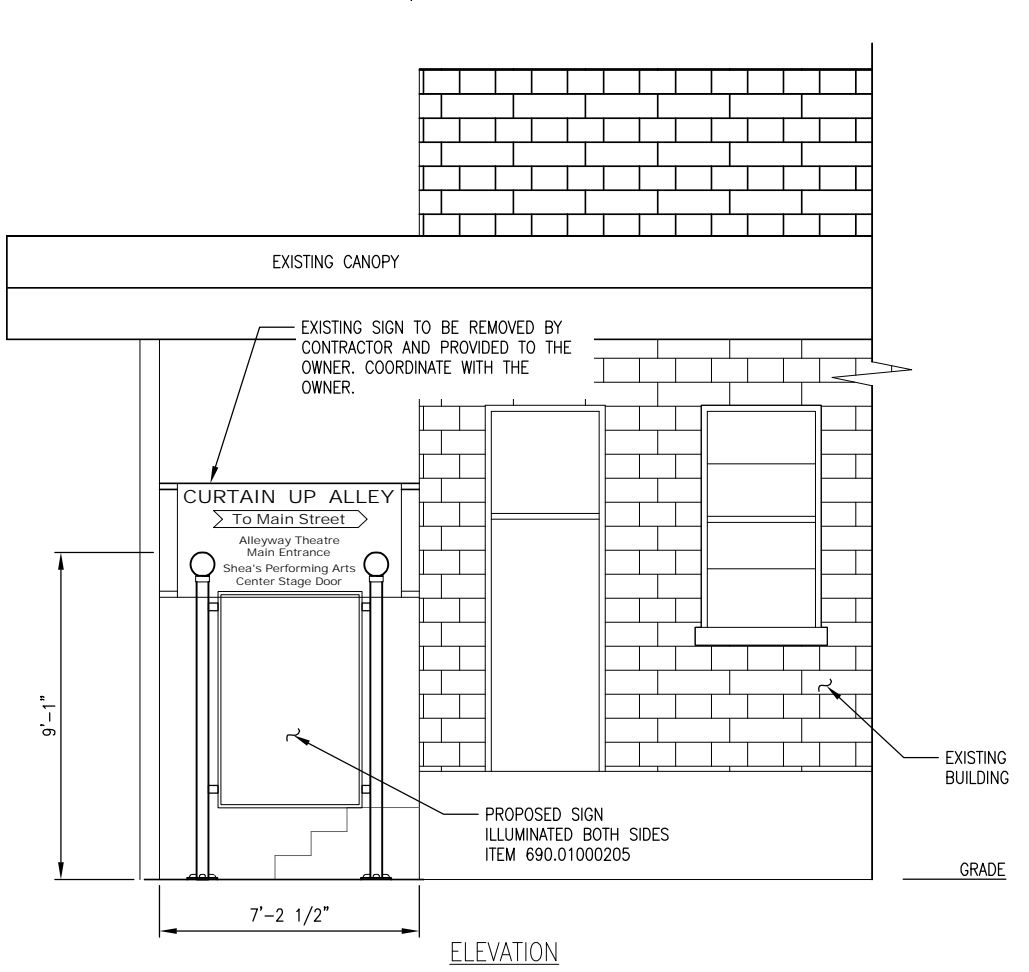
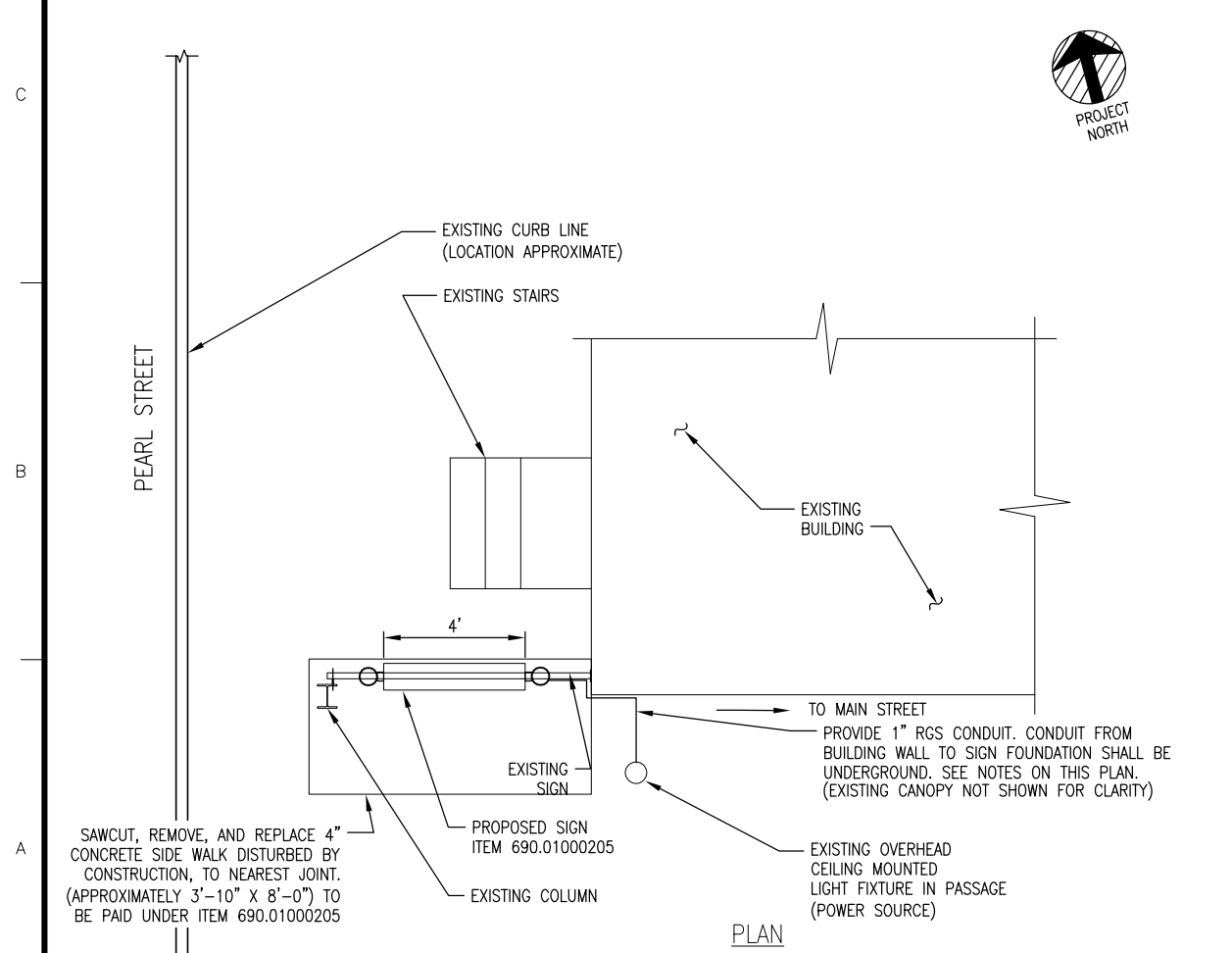
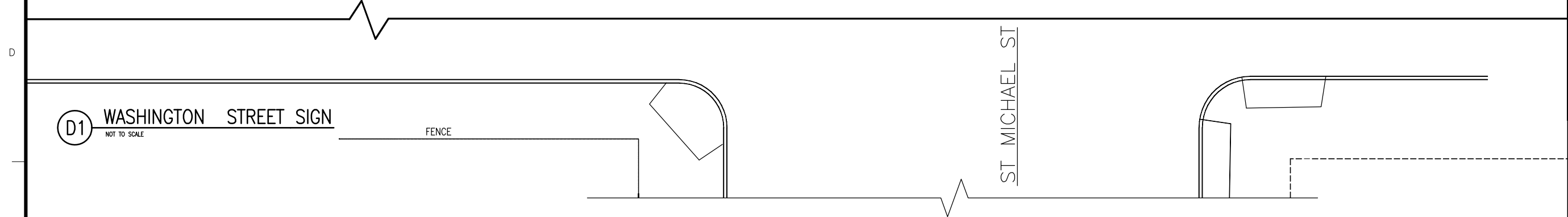
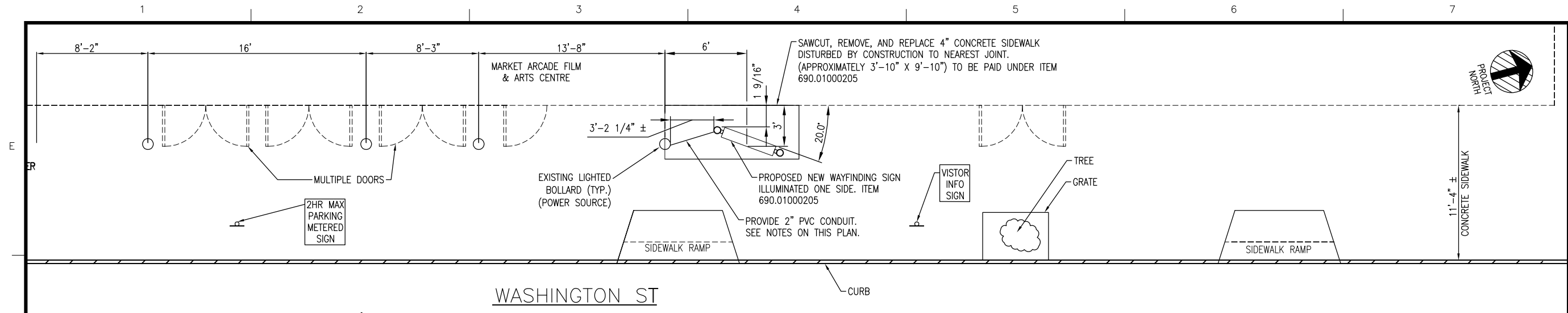
**WAYFINDING SIGN DETAILS**

DRAWING#  
**WF501**  
SHEET# 129 OF 185

**B2** TYPE 1 WAYFINDING SIGNS ITEM 690.01000205  
NOT TO SCALE (SIDE STREET)

**B4** TYPE 2 WAYFINDING SIGNS ITEM 690.01000205  
NOT TO SCALE (MAIN STREET)

1 2 3 4 5 6 7



- NOTES:**
- COORDINATE EXACT LOCATIONS OF WAYFINDING LIGHTED SIGNS FOR CONDUIT AND WIRING CONNECTIONS.
  - PROVIDE CONDUITS FOR AND WIRING FROM EXISTING POWER SOURCE (WITH 2 #12 AND 1 #12 AWG WIRES) TO TYPE 1 WAYFINDING LIGHTED SIGNS. (INCLUDE ALL WORK UNDER UNIT PRICE FOR TYPE 1 SIGNS).
  - ALL LOCATIONS SHALL BE RESTORED TO THEIR ORIGINAL CONDITION.
  - DEMOLITION, RESTORATION, EXCAVATION, BACKFILLING, FURNISHING AND INSTALLING ELECTRICAL ITEMS, AND ALL OTHER INCIDENTAL WORK ASSOCIATED WITH THE SIGN INSTALLATION AT THESE LOCATIONS SHALL BE INCLUDED UNDER ITEMS 690.01000205.



DEPARTMENT OF PUBLIC WORKS  
PARKS AND STREETS  
CITY OF BUFFALO, NEW YORK

**PB PARSONS  
BRINCKERHOFF**  
50 LAKEFRONT BOULEVARD, SUITE 111  
BUFFALO, N.Y. 14202  
716-853-1220

MAIN STREET —  
600 BLOCK  
CHIPPEWA STREET TO  
TUPPER STREET

| MARK | DATE    | DESCRIPTION |
|------|---------|-------------|
| △    | 11/7/11 | PS&E UPDATE |
| △    | 6/17/11 | PS&E UPDATE |
| △    | 4/13/11 | PS&E        |
| △    | 4/1/11  | DRAFT PS&E  |

|                      |                           |
|----------------------|---------------------------|
| ISSUE:               |                           |
| PIN:                 | 5822.12                   |
| DESIGNER PROJECT NO: | 09-1502                   |
| CAD DWG FILE:        | WF101 WAYFINDING SIGN.dwg |
| DRAWN BY:            | PMB                       |
| CHECKED BY:          | TI                        |
| SCALE:               | AS NOTED                  |
| COPYRIGHT:           |                           |

SHEET TITLE

**SIDE STREET  
WAYFINDING SIGNS**

DRAWING#  
**WF102**  
SHEET# 128 OF 185